


# PLAID

CAT. B



44% Acrilica	44% Acrylic
23% Lana	23% Wool
17% Cotone	17% Cotton
13% Nylon	13% Nylon
3% Poliestere	3% Polyester

Martindale test: 30.000  
Light Fastness: 4-5  
Pilling: 4  
H. 140 cm - Gr. 1.150 mtl  
 BS 5852 CIGARETTE TEST



B01PL



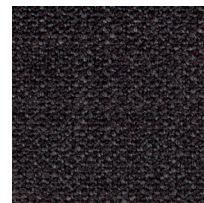
B67PL



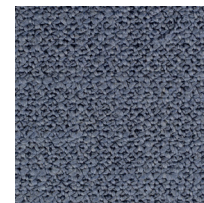
B04PL



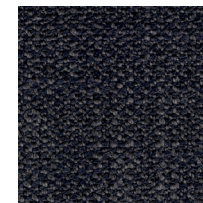
B06PL



B16PL



B65PL



B17PL



B54PL



B34PL